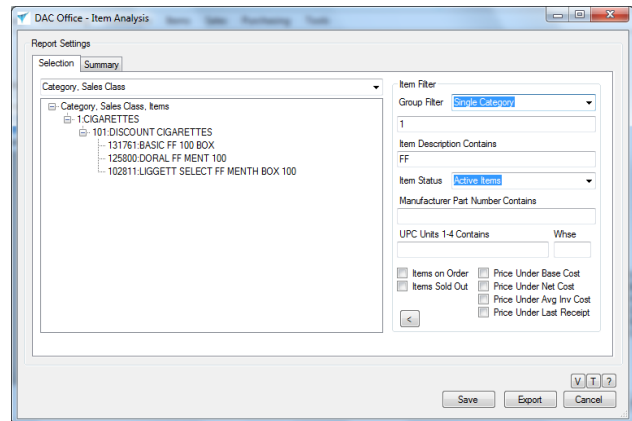


Overview

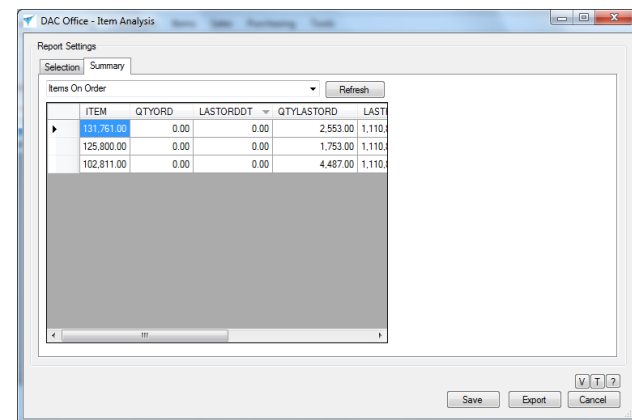
The Item Analysis report allows you to analyze items in a variety of ways. If you wanted to compare all Full Flavored cigarettes you could by selecting Single Category in the Group Filter and then putting "FF" for the Item Description. Click the "<" button to populate the tree view with the items matching the specified criteria. In the tree view, click the "+" to expand the Category and/or Sales Class.



Summary Tab

Click on the Summary tab to continue the analysis of Full Flavored cigarettes. Select the information you want to view and click the Refresh button to display the data.

- YTD, PTD Sales
- Weekly and Daily Sales
- Unit Information
- Item Grouping
- On Order Status
- Item Movement, etc.



Exported Report

Click on the Export button to create an Excel spreadsheet with the items in the tree view. TODO: expand what gets exported, waiting on suggestions from users.

